

Boating safety and enforcement program operated by the Mariposa County Sheriff's Department. Funding assistance provided by the State of California, Department of Boating and Waterways.

Mariposa County Sheriff's Office
(209) 966-3614

Lake McClure/McSwain Parks Dept.
For camping & visitor information call:
(209) 378-2521
or visit www.lakemcclure.com

For camping reservations call:
(800) 468-8889

For fishing & rental information call:
Lake McSwain Marina
(209) 378-2534
Lake McClure Marinas
(209) 378-2441
or visit
www.houseboats.com

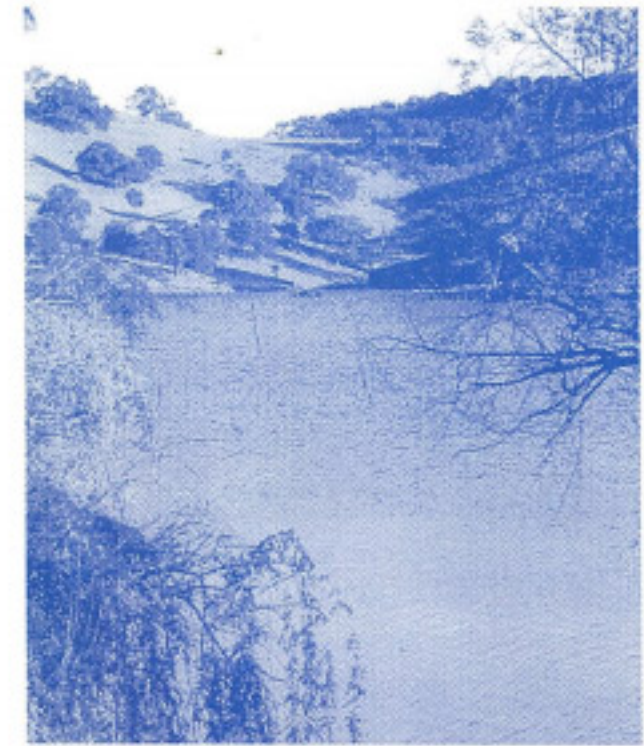
Please Remember

- All boats must travel in a counter clockwise rotation on the lake.
- Watch for submerged obstacles and floating debris.
- No firearms or fireworks at any time.

**MARIPOSA COUNTY ORDINANCE,
TITLE 12, CHAPTER 12.16
(Portions Thereof)
ADOPTED MAY, 2000**

REGULATING THE PUBLIC USE OF

**Lake McClure
Lake McSwain
RECREATION AREAS**



Recreation Areas and Facilities
Operated By The

**MERCED IRRIGATION DISTRICT
PARKS DEPARTMENT
9090 Lake McClure Road
Snelling, California 95369**

Use of all project and recreational facilities is at your own risk, and pursuant to your agreement to indemnify and hold the District harmless from any negligent use.